



The Companion

Friends Forever Humane Society Newsletter

Giving Companion Animals a Second Chance Since 1953



Friends Forever Humane Society

Freeport, IL

Summer 2012

Twist of Fate Brings Forever Home to Pair of Yorkies by Doug Toepfer

Friends Forever often receives phone calls regarding unwanted or abandoned animals. When those phone calls come in, they are evaluated by Carol, FFHS manager, and either FFHS or one of its community partners is usually able to work with the caller and make arrangements for these animals. Several of these inquiries are about animals that are in immediate danger. The below situation is just such a case.

While covering the phones, I received a phone call from a person who witnessed a box being tossed out of a van along Highway 20. Upset because they witnessed someone littering, the passerby slowed to see what the person in the van had that couldn't be discarded at home. The surprise came when the passerby noticed the box moving. After stopping and upon further inspection, the box contained a male and female Yorkshire terrier, both in terrible shape. After arriving home the good Samaritan contacted FFHS and made arrangements to bring the dogs in the next morning.

The dogs arrived early the next day, a male and female around 8 years of age. Their coats were matted with dirt, urine and feces. Looking in their eyes, one could easily notice the kindness in these animals as well as a plea for help and unconditional love.

To the rescue..... The dogs were checked for microchips and immediate health problems and a call was made to one of our many community partners: Country Lane Pet Lodge. Deb Held and her staff have provided FFHS with their grooming services, free of charge, to many of our companion animals. This time, the task was daunting and a priority to this poor pair. Without hesitation, groomers from Country Lane Pet Lodge took on the task of clipping and cleaning this hapless duo, and turning them from tangles of dog waste and hair into two cute and energetic companion animals, looking for a forever home.



continued on Page 2

CALENDAR OF EVENTS

July 10-15, 2012 - Visit FFHS at the Stephenson County Fair

July 27, 2012 - Juke Box Rock and Roll Concert, Freeport Eagles Club. A benefit for Friends Forever.

August 12, 2012 - Classic Car Show at Friends Forever

September 15, 2012 - Friends Forever Poker Run

September 28-29, 2012 - Fall Rummage Sale

INSIDE THIS ISSUE

<i>From the President</i>	2
<i>Treasurer's Report</i>	4-6
<i>Manager's Report</i>	7
<i>Fundraising</i>	8-9
<i>Muses, Barks and Meows</i>	9
<i>FFHS Alumni Serve Community</i>	10
<i>Memorials and Donations</i>	12-
<i>Shelter Operations</i>	16
<i>Education</i>	18



**Friends Forever
Humane Society
Board of Directors**

**Doug Toepfer -
President**

–Vice President

**Terri Matthews -
Treasurer**

Pat Toth - Secretary

Karen Christen

Judy Gonder

Diane Heeren

Deb Klages

Melinda Kluge

Jami Nielsen

JC Wilson

Pam Wilson

**Manager
Carol Falconer**

**Asst. Manager
Melody Haeft**

President's Box by Doug Toepfer, FFHS Board President

May is here and with it comes the addition of multiple tasks around Friends Forever. With the rummage sale behind us and a big success (Thank you to Jami and her volunteers) its time to keep looking ahead.

During the dog park beautification weekend. Lots of work was done, however there is a lot more work to do! We have lists of projects available if anyone is interested in adopting and completing one. Contact Carol or Melody at the shelter if you want to get your paws dirty for the animals.

The same weekend of the beautification, an Eagle Scout began his project, dividing our kennel exercise yard into 3 sections. This will allow us to have three dogs outside at a time

as opposed to one. The scouts were able to complete the project over the next two weekends.

The Community Fundraiser is off to a slow start, but I am hopeful we WILL be able to reach our goal of \$55,000.00 by September 30th.

Several items are available for sale in the shelter. I encourage everyone to stop out look through the items.

We are still collecting aluminum cans, our goal is to reach 2012 lbs. of aluminum recycled this year.

Enjoy your summer and visit our website calendar for upcoming events!

*Twist of Fate Brings Forever Home to Pair of
Yorkies by Doug Toepfer cont'd from page 1*

Our thanks goes out to Deb Held and her staff at Country Lane Pet Lodge, for their continuing support and partnership in helping us to fulfill our mission.





8th Annual Rich Sokup Memorial Golf Classic

Golf, Food and Silent Auction

Friends Forever Humane Society invites you to attend the 8th Annual Rich Sokup Memorial Golf Classic Saturday June 9th at Park Hills Golf Course. Start time is 8:30 am. Golfers of all levels are invited to join in the fun. Cost is \$ 75.00 per golfer. \$ 60.00 for Park Hills Annual Members. Non-golfers are invited to join us for lunch. The cost for lunch only is \$ 20.00. A Silent Auction will be part of the days events. Please register by June 26. Registration forms are available on line at www.friendsforevehs.org. For more information call Steve Young at 235-3450 or Greg Kaski at 235-3528.

Community Fundraising Campaign

The Community Fundraising Campaign is off to a slow start. Though funds are coming in, we are a long way from our goal of \$55,000.00 by September 30, 2012. Continued maintenance, veterinary bills, and the daily expenses of running the shelter continue to put a strain on the finances of Friends Forever.

We need your help! Friends Forever is looking for creative, large revenue producing, fundraising ideas to help meet our goal. Anyone interested in helping either financially or as a volunteer willing to call on business' please contact the office.

Having the support of a community is vital to any non-profit organization that provides a community service. In these rough economic times, donor dollars are harder to find. Unfortunately, "explaining" that to a room full of dogs, puppies, cats and kittens isn't an easy task. They look at you with trusting eyes, knowing the staff and volunteers are committed to providing them with food, warmth, kindness and love. Friends Forever IS committed to our mission.

We are hoping that through the generosity of our members, their families, and the communities we live in that we will never have to "explain" to our animals why we can no longer help.

It takes a village to raise a child and it takes a community to help care for our stray and unwanted companion animals. Be part of the Friends Forever community today!

*Dollars and Sense by Terri Matthews, FFHS Board Treasurer*

I probably should start this column by going over the 1st quarter financial results but I'm not going to. Instead I'm jumping right to the interesting stuff, which to me is the audit. The Auditors were at FFHS on the 17th and 18th and the 21st of April. We had a lot of the information they had requested all ready for them to dig into. They asked some questions, and we gave them some more information. Then they took all the data they had gathered and went back to their offices to put it all together which is a totally normal procedure for an audit. The official report will not be ready until later in May. They are scheduled to present the final findings to the board on May 23rd. I met with them on May 3rd to get the preliminary high level results so I could report on it to you.

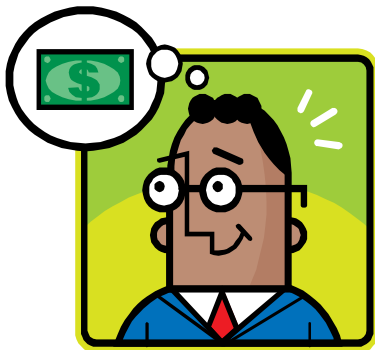
The good news is we did not fail the 'year and a day' viability test. Of course we didn't actually pass the test either. We are in the border line category. This means that when they did the test to see if we could cover our expenses for a year and a day just using our current liquid assets, like stocks, bonds and our money market, the answer was no. Luckily for us, we have fixed assets we could sell in a pinch to cover the shortfall. In other words, they didn't fail us because in the worst case scenario we could sell the dog park and survive the 12 months and a day.

The Auditors had one more conclusion. Taking into account past trends and the financial results for the 1st quarter, they are predicting that we will lose \$40,000 in 2012. When we did the 2012 budget, we actually came to a similar conclusion which is why we started the Community Campaign. By raising an addition \$55,000 this year, we will cover the predicted shortage and give ourselves the additional income to put back enough liquid assets so that next year we will actually pass the viability test.

This brings me back to the 1st quarter financial results. Due to requests from members, we have included the 2012 financials in this newsletter and will continue to do that throughout the year. The bottom line is we lost money in January and February, but we were expecting to. We haven't historically had any fund raisers in the first two months of the year, so we lose money in those months every year. We had a great March this year with the Chili Day doing better than budgeted and the Home Show doing well. We also started seeing the savings from the Staff voluntarily cutting their hours and the extra income from raising the dog adoption fees. We made enough profit in March to cover over half of the loss for January and February and to put \$5000 into the investments for 1st quarter as promised.

April will show a profit due in large part to the rummage sale proceeds. We had a couple of unexpected expenses also. The sewage pump that went out mid month has been fixed and the bill just came. It is around \$560. The next week, the cat room furnace went out. A volunteer was able to get it working temporarily. Luckily it has now warmed up enough we have time to get it fixed permanently. The parts are on order and are being donated, so we dodged that cost.

We are still on track for turning around our financials in 2012. We need to make a profit every month for the rest of this year (much easier said than done), and hopefully not see too many unexpected expenses. And we will be set to have a better audit verdict next year.





2012 1st Quarter Balance Sheet

ASSETS

Current Assets

Checking	4,275.50
Certificate of Deposit	52,886.24
Money Market Account	<u>13,319.22</u>

Total Current Assets	<u>70,480.96</u>
----------------------	------------------

Investments

Investment Portfolio @ FMV	130,275.21
Savings Bonds	<u>5,514.20</u>

Total Investments	<u>135,789.41</u>
-------------------	-------------------

Other Current Assets

Accounts Receivable	-305.00
Un-deposited Funds	<u>50.00</u>

Total Other Current Assets	<u>-255.00</u>
----------------------------	----------------

Fixed Assets

Dog Park	26,758.50
Building	193,361.99
Building Improvement	137,322.97
Furniture & Equipment	0.00
Land Improvement	30,893.94
Land	53,000.00
Shelter Equipment	12,220.33
Vehicle	<u>0.00</u>

Total Fixed Assets	<u>453,557.73</u>
--------------------	-------------------

TOTAL ASSETS

LIABILITIES & EQUITY

Liabilities

Accounts Payable	-82.69
Line of Credit	14,100.00
IL Sales Tax Payable	164.18
Fica & Fed Wh Tax Payable	2,218.22
IL State Wh Payable	107.62

Total Liabilities	16,507.33
-------------------	-----------

Equity

29002 · Perm Restricted - Endowment	655.00
29001 · Temporarily Restricted	15,123.84
29000 · Unrestricted - Operating	633,959.70
Net Income	<u>-6,672.77</u>

Total Equity	<u>643,065.77</u>
--------------	-------------------

TOTAL LIABILITIES & EQUITY

<u>659,573.10</u>



2012 1st Quarter Profit and Loss

Jan - Mar 12

Income

Fund Raising, net of expenses	10,446.12
Program Income (animal related)	13,863.12
Memberships	2,585.00
Bequests	0.00
Memorials	3,540.00
Contributions	8,973.99
Gifts in Kind	0.00
Grants	0.00
Gift Shop	1,933.55
Net Investment Income	8,759.87
Total Income	50,101.65

Expenses

Salaries and other wages	28,852.14
Payroll and other taxes	2,784.57
Advertising and Marketing	13.99
Auto Expense	76.37
Dues & Subscriptions	0.00
Equipment Purchases	427.61
Filing Fees	0.00
Insurance	1,389.23
Licenses and Permits	0.00
Office Expense	504.69
Postage	26.40
Printing	760.00
Professional Fees	0.00
Maintenance Supplies	719.55
Repair & Maintenance	366.00
Telephone	545.20
Utilities	6,638.40
Veterinary fees	3,990.50
Spay/Neuter Program	372.00
Dog Park Expenses	0.00
Adoption Refunds	120.00
Animal Food & Supplies	770.10
Gift Shop	2,288.37
Travel & Education	0.00
Miscellaneous	7.00
Board Expenses	1,577.22
Depreciation	4,545.08
Total Expenses	56,774.42



Manager's Report *by Carol Falconer*

The first quarter drew to a close on 3 very busy months at Friends Forever. Until someone spends the day with our animals, walking them, feeding them, doing exams, cleaning their kennels, or just playing with them, one doesn't really understand the love and devotion our staff has for each and every animal that passes through our doors.

Though the statistics may not sound impressive to some, they are certainly impressive to our staff and volunteers that interact with these animals daily. These are the folks that see the want, the pain and before long the joy in the eyes of our residents. For the first three months of 2012, the door has been revolving. The "numbers" are listed below, but with each number there is also a story.

Total Animals Adopted 92

Total Animals Received 81

Total animals either awaiting adoption or awaiting medical clearance to be available for adoption as of May 1, 2012 (this includes 14 animals in foster care) 72

Each companion animal becomes part of the Friends Forever family regardless of its length of stay. It is said that saying good-bye can be bitter sweet. Such is the case for all of us at FFHS. Though it is sad to see those special members of the "family" leave, it is heart warming to see them find their forever homes. When the staff and volunteers go home at the end of a the day, they take a little piece of our "family" home with them. We know that each of our companion animals also take a little piece of us with them when they find their forever homes.

If I had but one wish, it would be that people are as understanding as animals. All an animal wants is food, shelter and love. I just wish all people would understand the importance of providing food, shelter and love for their pets and accepting their pets as part of their family.

Stop out and visit us, browse our gift shop or play with your dog in our park. We welcome you with open paws at Friends Forever.



Organic Dogs and Cats
Quality Pet Products





Fundraising Events by Jami Nielsen

For the volunteers!!!!

I can no other answer make, but, thanks and thanks.....William Shakespeare

I want to take this time to thank the tireless volunteers that participated in the Chili Supper and Rummage Sale. Both were a great success due to the , community for their support, donations and the people that spent the day during the Chili Supper and the weekend warriors for the Rummage Sale. All our efforts paid off. We earned over \$6,500.00 at the Chili Supper and over \$7,300.00 for the Rummage Sale. Our bake sale earned \$530.00 the largest and quickest sales according to the volunteers that have manned the sale table in the past.

It has been my pleasure to work with the wonderful group of volunteers we have supporting Friends Forever Humane Society. I am looking forward to other events yet to come this year.....

You give but little when you give of your possessions. It is when you give of yourself that you truly give.....Kahlil Gibran.

Thank you for all you do. Jami Nielsen (fundraising chairman).

June 9th: Rich Sokup Memorial Golf Classic. The Classic will be held at Park Hills Golf Course. \$75.00 per golfer includes 18 holes, cart rental and meal.

June 9th: Flapjack Fundraiser at Applebee's from 8am to 10am. \$6.00 person.

July 10th-15th: Visit us at the Stephenson County Fair! Stop by our booth and say hello to some of

our members, staff and volunteers. Don't forget our companion animals!

July 27th: Juke Box Rock and Roll Fundraiser Concert at the Eagles Club. More to follow!

September 15th: Friends Forever Poker Run. Stay tuned for more details!



Fundraising Events by Jami Nielsen

cont'd

Fall Rummage Sale: September 28th and 29th at the Jane Addams Community Center. Setup and donations, September 27th. Information is the same as the Spring Rummage sale.

November 17th is our annual Cookie Walk at the Eagles Club from 8:00 AM until 11:00 AM. Our beautiful gift baskets will once again be available.

December 1st: Photos with Santa from 1:00 PM to 5:00 PM a

4x6 professional photo for \$10.00 taken at the Shelter. Pets bring your humans.

Look for updates on these and more events on our website and in future newsletters!

Muses, Barks and Meows



Sand box!? I thought it was the litter box, Honest!



Yes, I do like my head out the window and NO, you can't blow in my face!

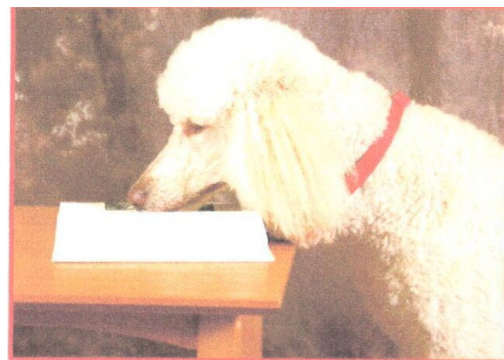


I wonder if these stripes make me look fat.....



FFHS Canine Alumni Serve the Community by Judy Gonder

FFHS is pleased to continue a series of articles featuring some of our shelter dogs that have gone on to become certified therapy dogs in our community and the surrounding area. These dogs have proven to be our good will ambassadors for promoting adoptions from a shelter.



Pete the Poodle

While they all came to the shelter under different circumstances, each one found a loving home when their new owners saw their potential to help provide emotional support to anyone needing a warm, furry friend.

Each dog that we will feature is certified with Therapy Dogs International (88 Bartley Road, Flanders, NJ 07836) and a member of the local Freeport Chapter of TDI. They are involved in visiting assisted living centers, hospitals, schools, and the PAWS for Reading program at the Freeport Public Library. The dogs also take part in many community events.

We hope that you will enjoy meeting some of our Friends Forever Alumni and will learn more about what it takes to become a therapy dog.

This story is reprinted with permission from the publication:

Dog Tales
Freeport Therapy Dogs
"Paws for Reading"

"Chances are, if you've never known a Poodle, you think of a small, yappy dog with a really silly haircut"

What picture pops into your head when someone says "Poodle"? Chances are, if you've never known a Poodle, you think of a small, yappy dog with a really silly haircut. Maybe some Poodles are like that, but not me.

I am a Standard Poodle, the largest of the Poodle breeds. I weigh 55 pounds. I have curly hair, which doesn't shed, so I have to get regular haircuts, just like people do. I wear my hair short, except for the pom-pom on my tail. I wonder if the pom-pom may be just a little silly. What do you think?

I am five-years old. I don't *really* know how to read, but I have learned to be a *really* good listener.

I love to come to the library. I began visiting the library nearly every Sunday morning with the library director, Carole Dickerson, who adopted me when I was one-year old. Now that I'm a certified therapy dog, I come to the library more often, to hear children read, instead of just coming with my mom on Sunday morning, when the library is closed.

I have learned to ride the elevator. It was pretty scary at first, but Mom gave me



treats whenever I got into the elevator and said, "Good boy, Pete," so I started thinking the elevator wasn't so scary after all.

I first lived with a couple who had another Standard Poodle. That Standard Poodle was older, and he was very well behaved. I wasn't well behaved! I was just a puppy.

What did I do to get into trouble? Maybe I chewed a shoe. Maybe I barked at the mail carrier. Maybe I jumped on the furniture. Maybe I even ate a book! Whatever it was, the couple decided I didn't fit into their home, so they took me to Friends Forever Humane Society to find a new home.

Mom thinks Standard Poodles are the best dogs there are. She adopted me immediately, and the very next week, we started going to doggy obedience classes together so I could learn some manners.

Poodles are very active dogs, just like Golden Retrievers and German Shepherd Dogs, so Mom makes sure I get lots of exercise, which also helps me with my manners.

I enjoy trips to the dog park, where I can run around, off leash, and make friends with other dogs. I also enjoy going to Carlson Canine Camp one or two times a week, so I can spend the entire day playing with my fellow four-legged campers. Other days, I wait until Mom comes home to take me for a long walk. Oakdale Park has the best trails, and it is just a short drive there. Did I mention that I also like to ride in the car?

I like other dogs, especially Canine Camp friends Syd, Sophie, and Eddie. Eddie is also a Friends Forever alumnus. Mom and I adopted another Standard Poodle, Frances, in 2009. Frances was rescued from an animal hoarder (Ugh! Sounds awful!), so she's been through a lot. Mom says I am Frances's role model and that I am a good big brother to her.

I also like our cat Willie, but I wish Willie liked me better. Sometimes, when I get excited or startle Willie, she swats me. Willie is not afraid of anything, especially not of large dogs with curly hair. I am still learning not to startle Willie.

I have grown up a lot in the last four years, but I am still have a lot ahead of me. Next on my to-do list: convince Mom to teach me some tricks so I can show off for the kids in the Paws for Reading program.

(Owner and Author: Carol Dickerson)

In Memory

It is with sadness that we learned of Pete's unexpected and untimely death on May 2, 2012, prior this issue of the newsletter was going to press. Our sincere condolences are with Carole and Frances at this difficult time.

Pete was a proud representative of rescue dogs everywhere and a local community activist. In addition to his participation in Therapy Dogs International, he volunteered for almost a year as a foster brother for another Friends Forever alumnus, Kelly, who has since been adopted by a wonderful human and canine family. In addition to being a regular at the library's Paws for Reading program and an occasional visitor to schools and nursing homes, Pete was a top earner in the annual Stroll-A-Thon, which raises money for senior transportation.

"MOM THINKS
STANDARD
POODLES ARE
THE BEST DOGS
THERE ARE. SHE
ADOPTED ME
IMMEDIATELY"



Donations

If we have inadvertently missed a gift, donation, or memorial, we apologize. Any omissions will be added to the next newsletter if we are notified.

Due to space limitations, we are unable at times to print special sentiments in every issue.

FFHS thanks all of our donors. Without your continued support, FFHS wouldn't be able to fulfill our mission.

Advanced Machine & Engineering Co

Phyllis Alexander
Larry Altensey
Carole Andres
Michael & Kay Bach
Darlene Barr
Andrew Bernsee
Rebecca Bicker
Edward and Janet Boehm
Harold Book
Brownie Troop 5319
Jacquelyn Bruegger
Lowell & Diane Buck
Shirley Bumby
Karen Butler
Janice E. Campbell
Jan Carlson
Shirley Caudle
Anna Cheeseman
Mike & Tazzy Christ
Mavis E. Clark
Vianna M. Coomber
Donna Cornelius
Mary Crawford
Jeanne Czervionke
Jann Danielle
Davis Brownie Troop
Lisa & Barry De Boor
Carole Dickerson
James & Sandra Dixon
DM Moore Marketing Corporation
LaVerne & Mildred Dole
Carol Drummet
Jarrett DuBois
E.D. Etnyre & Co
Lisa & Tim Ebberts
Donna Eisenbise
Diana Elliot
Lynn Elliott
Robert Foley
Freeport Family Chiropractic
Cherilyn Gassman
Michael & Judith Gerharz
Pat Gillespie
Robert Glaser

Gretchen Goldsmith
Judith Gonder
Joseph Graham
Don Grunder
Glenn & Karen Hadaway Jr.
Robert & Crystal Haddad
Jane E. Hammer
Barbara Hansen
Lance & Helena Harrod
Arlen & Diane Heeren
Rick & Connie Heinrich
R L Henson
Mark & Sharon Hendrickson
Hiester Construction Inc.
Anita Highland
Audrey Hildebrand
Lucille Hofer
Sylvia Hoggatt
Richard & Althea Hornung
J.D's Pet Paradise
Rhonda Jones
Stephanie Jones
Joe Karakas
Rebecca Kent
Larae & Barbara Klinger
Jean Koberstein
John & Susan Krier
Jonanna & Michael Lepold
Greg & Diane Lloyd
Mark Maly
Nicole & Anthony Manthei
David & Nancy McIntyre
Bill & Norma McLenahan
Mary E Miller
Robert & Mary Miller
Loren & Margaret Morgan
Deb Mrugala
Gary & Rebecca Nailor
Dana Nappi
Jami Nielsen
Ralph Norman
Barb Nozzi
Gary Oldenburg
Christine & Thomas Opolny
Kim Rees
Patricia Riddell
Rock Valley Cat Club
Larry Rockey

John & Trudi Rosazza
Sandy & Dee Roser
Rita K Rowe
Lisa Ruble
Virginia Runte
Betty Rupnow
Saelens Enterprises, Inc.
Terry & Deb Schlosser
Diana Schmitt
Becky Schnaper
Marian Schneider
Betty Schrader
Wayne & Trixie Shellhouse
Marlene Shippy
Tina Sievers
Bob & Mary Spahn
Diane Stearns
Beth Street
Elizabeth Sullivan
Laurie & Don Swanson
Jennette Swenson
Becky Thompson
Barb Thompson
Patricia Toth
Donald Tune
Anna Uchno
Mary Van Raden
Stacey & Rob Vock
Paul Watkins
Kristina Weaver
Michelle Wilcox
Deb Wilson
Autum Witthall
Jon & Pam Wolfe
Susan Zink



In Memory/Recognition/Honor Of

In Memory of Julie Ransom

Frances Ransom
Janice Kniss

In Recognition of Diane Heeren
Carol Davis

In loving memory of "Mr Buttons" the poodle
Mike, Tazzy, Paris & Prince Christ

In memory of Pinto
Judy Decker

In Memory of Jenny & Midnite
Jill & Mike Rohner

In memory of our pets, Mark, Kindy, Brutus, Drummer, Red
Joanne Dennehy

In Honor of Molly, Patti & Bob Groth's Cat
Jon & Pam Wolfe

In memory of our dog Brandy
Robert Desmond

In Honor of Cassie Katie, Jeff and Barb Bocker's Dog
Judith Ann & Virgil Bocker

In Memory of Gracie and Nellie Belle, Our Beloved Shelties
Royce & Janet Piefer

In Memory of Phyliss Bauch and her love of animals
Shirley Welte

In memory of Ben and Shortcake
David & Angela Snyders

In Memory of Ramses
Marilyn Smit

In Memory of Bob Kidder, Cocoa, Bailey, Chi Chi & Tzu Ping
JoAnn Blomquest

In memory of Oscar
Kenneth Collin

In Memory of Sandy
Cynthia Bonnet

In Memory of Queenie
Paul & Norma Meier

In Memory of Dallas & Minnie
Kevin & Joanne Carr

In memory of Louise Grone
New Covenant Fellowship

In Memory of Jack & Hunter
Robert & Norine Ehrler

In Memory of Jenny
Jill & Mike Rohner

In recognition of Sunny
Liz Spooner

In Memory of Levi, Spencer, Taylor, Henry
Jon & Pam Wolfe

In Memory of Jack Earhart
Marie Earhart

In Recognition of Big Baby the cat
Patricia Scavone-Ely

In Memory of Leonard Dexter
Sam & Rosemary Havens

In Memory of Beagle Sarni adopted Oct. 1997
Betty Swalve

In Memory of Hazel Plager
Judith Ann & Virgil Bocker

In Recognition of Duckie I, II, III
Linda Weaver

In Memory of Don Johnson
Gretchen Diab
Barbara Johnson

In Memory of Joan Stevens
Jackie & Brian Boomer

In memory of Tess and Lottie
Robert & Joan Croffoot

Cont'd on page 14

SUPPORT FRIENDS

FOREVER HUMANE

SOCIETY'S WORK

AND HONOR LOVED

ONES – FURRY OR

OTHERWISE—WITH A

MONETARY GIFT.

KEEP THEIR

MEMORIES ALIVE.



In Memory/Recognition/Honor Of cont'd from pg. 13

In Memory of Louise Grove
Lynne Czervionke & Laura Ditsworth

In Memory of Leona Bousker
Arlen & Diane Heeren

In Recognition of Cricket & Connery
Rebecca Shriver

In honor of Wednesday
Bill Potamianos

In Memory of Maybelline Fizdale
Michelle Princer

In Memory of Snickers
Bobbie Schoonhoven

In Memory of a Very Special Lady, Sharon Heitzman
Mike, Tazzy, Paris & Prince Christ

In Loving Memory of our close and dear friend, Benice Cali
Mike, Eldora (Tazzy), Paris & Prince Christ

In Memory of Penny & Hogan & Emma who left us too soon
Thomas & Kathleen Eberle

In Memory of Lad, Rosie & Amy, My Shelties I lost
Betty Griffin

In Memory of Buddy
Marcia Durling

In Memory of Jack, J.J. (Rufus) Molly, Max
Carol Gray

In Memory of Amy Petit
Debra Monigold

In Memory of Sharon Heitzman
Marilyn Smit

In Memory of Abe & Viola Armagost, Joe & Emma Bocker, our Parents
Judith Ann & Virgil Bocker

In Memory of Pokey, Buddy, Molly, Panzer,

Sherman, Fluffy & Daisey
Mary Gallagher

In Memory of Winnie Wine
Patricia Riddell

In Recognition of Stephen Knoup & Delbert Schultz
Patricia Knoup

In Recognition of Dr. Thomas Hughes of Forreston
Stan & Kathryn Ubben

In Memory of Beemer
Patricia Carbaugh

In Memory of JoAnn DeMong
Bob & Sandy Chapman

In Memory of Cassie, the beloved boxer of Jack & Judy Petta
Gayle & Harry Klepper

In Memory of Amy Petit
Debra Monigold
Amy Shockey

In Memory of Ted E Bear
Janice E. Campbell

In Honor of Big Jake
Janice E. Campbell

In Honor of Max-A-Million
Janice E. Campbell

In Memory of Pete, Carole Dickerson's dog
Sue & Clayton Heilemeier
Jan Carlson
E. Carole Dickerson
Robert & Crystal Haddad
Jae Hezlep
Beth Street
Eric & Sheila Welch
Marilyn Smit
Franklyn R. Gonder
Judy Gonder

In Honor of Ruth Bernhard for Mother's Day
Lynn & Rudolph Grahn





In Memory/Recognition/Honor Of cont'd from pg. 14

In Memory of Louise Grove
Mary Ellen Lincoln

In Memory of Molly, Deb & Tim Magee's
Dog
Jon & Pam Wolfe

In Memory of Judy Petta's dogs Cassie & Sassie
Judith Ann & Virgil Bocker
In Memory of Tiger
Mary Guentner

Corrections from the Winter Newsletter

In Memory of Julie Ransom
Melody & Tracey Briggs
Lee & Connie Eilers
Tom & Dar Gitchel
Lee & Janice Lockwood
Bill and Irene J. Modica
Al & Lucretia Mae Smith

Giving for the Future

Planned Gifts

These are gifts given through wills, life insurance, pooled income funds and charitable trusts. Give them with the satisfaction of knowing you are helping others and have the added benefit of a possible tax savings.

Bequests

You can name the Friends Forever Humane Society as a beneficiary in your will. You're free to designate the bequest by a specific amount, a percentage or some other manner. By naming a charity in your will, you control your assets during your lifetime and can reduce the death tax calculation on your estate. Contact us for more information about how to make a bequest.

*You can name
the Friends
Forever
Humane
Society as a
beneficiary in
your will.*





Shelter Operations

ADOPT A PROJECT!

INTERESTED IN

ADOPTING A

PROJECT?

CONTACT THE

SHELTER FOR

MORE

INFORMATION!

Spring is usually a busy time of year at Friends Forever and this year is no exception. Opening the pond, attending to projects inside the shelter, cleaning and sprucing up the dog park, painting and other projects keep everyone busy, staff and volunteers alike.

An Eagle Scout project divided the exercise yard for our dogs into three parts, allowing us to let three dogs out at a time instead of one.

The dog park beautification weekend, though lightly attended, allowed a great deal of landscaping to be done. However, we still have a lot more to do! We were also able to begin the process of repairing and re-painting agility equipment, picnic tables and benches.

Spring is kitten month and the upstairs cat room has been turned into a nursery for our mothers and their kittens while they grow and develop. It won't be long before they get to come downstairs with the older cats and kittens.

As small projects continue, there is a continued need for larger projects to be completed as well; The red warming shelter east of the building in the large dog park has suffered from the

weather and wind storms. The building is pulling apart and in need of some major TLC. Carpenter experience is welcomed to help us save this structure.

Our riding lawn mower is close to becoming recycled material. Serious engine issues plague the trusty old John Deere and immediate replacement is needed. A Facebook plea has been sent out to help us raise the \$10,000.00 needed to replace our old mower with a commercial mower, designed to last much longer during the arduous mowing seasons.

We are also looking for a Gator or UTV to replace our aging golf cart. Of course, donations of larger, more expensive items are ALWAYS appreciated.

As always, the animals continue to come to the shelter and we are placing them in forever homes as they become available.

There are some other plans in the works to help refine the procedure for daily dog park passes and a volunteer dog park committee. The rules of the dog park have changed. The new rules are on the next page and will be posted soon at the dog park entrances.

Enjoy your summer !



Dog Park Rules



- ♦ All dogs must be licensed and vaccinated.
- ♦ Dog park registration must be worn and visible when using Dog Park, or owners must have the laminated card with them at all times when in the dog park area.
- ♦ Dogs with a known history of dangerous behavior toward people or other dogs are prohibited from the dog park.
- ♦ Dogs must be supervised and under the voice control of their owners at all times.
- ♦ Owners must clean up after their dogs and dispose of waste properly.
- ♦ Maximum of 2 dogs per person can be in the park at any one time
- ♦ Puppies under the age of 4 months are prohibited in main dog park.
- ♦ Female dogs in heat are prohibited in Dog Park.
- ♦ Dogs must be leashed when entering or exiting the dog park. No retractable leashes are allowed. Leashes must not exceed 8 feet in length.
- ♦ Agility equipment is for dog use only.
- ♦ All young children must be supervised by an adult. Children under 12 are not allowed in main dog park.
- ♦ No glass containers allowed in the park.
- ♦ Smoking is prohibited within the park.
- ♦ Prong and spiked collars are prohibited in dog park area.
- ♦ Wheelchairs are the only non-FFHS wheeled vehicles allowed in the dog park. (Strollers are not allowed in the dog park.)
- ♦ Sick dogs, especially those with parasites should not be brought into the park until cleared by a vet.
- ♦ Owners must carry the dog's leash with them at all times. Owners must leash an unruly, aggressive, or mounting dog immediately and leave the dog park.
- ♦ Owners must remain in the park supervising their dogs at all times. (No dropping dogs off).
- ♦ Park hours are from Dawn to Dusk.
- ♦ Please put tennis balls and other toys back in the basket when finished playing.
- ♦ Owners should expect their dogs to be approached by other dogs when they are in the park.
- ♦ Violators of park rules will be asked to leave.

Friends Forever Humane Society reserves the right to refuse membership or entrance into the park to anyone not abiding by rules or displaying inappropriate behavior.

INTERESTED IN
BEING ON A
COMMITTEE
LIKE THE DOG
PARK?
CONTACT THE
SHELTER.



President's Pick by Doug Toepfer



Niketa

Hello,
My name is Niketa! I am a very affectionate and beautiful little girl! I love to play with toys and my sister Drizzy. I would love to see you today so please come to Friends Forever so we can meet!

**"Don't forget,
our rummage sale
is just around
the corner.
Bring your boxed
items to Friends
Forever and
donate them for
a good cause !"**

Education Committee Visits Local Schools by Judy Gonder

The statistics are sobering -- 50% of all children in the U.S. will be bitten by a dog before their 12th birthday. Children ages 5-9 are at the greatest risk. The vast majority of dog bites are from a dog known to the child.

During the month of April, the education committee presented the FFHS program, "Safety Around Dogs", to two local schools.

Tri County Christian School asked FFHS to come back this year for a repeat program for their students, Grades 1-3. Pam Wilson, Judy Gonder and little "DoBe" enjoyed the afternoon with the children while reviewing the safety rules. The students demonstrated their knowledge of dog safety and asked many good questions.

Jane Krug and Judy Gonder presented the program to the First Grade students at Empire School. With the help of little DoBe (our dog puppet), this interactive program puts students in situations where caution is necessary for the safety of an individual. Little DoBe reminded the students: Do Be Safe around dogs.

Community outreach is an important part of the FFHS mission. We appreciate the opportunity to work with area teachers in providing children with the basic tools to stay safe while interacting with their own pets and the furry friends they may encounter.



Pond Rules

- ♦ Dogs are the only animals allowed in the park or pond.
- ♦ No children or adults allowed in the water.
- ♦ Do not throw rocks in the pond.
- ♦ Do not throw dogs in the pond.
- ♦ Children are not allowed within the short fenced area surrounding the pond.
- ♦ All other dog park rules apply.



DID YOU
KNOW WE
NOW OVER 9
ACRES
EVERY WEEK
AT THE DOG
PARK?

FFHS Year Round Wish List



Donations are always welcome. There are some items we use daily and others we would love to have for the safety and security of our staff, visitors and animals.

Often, the staff identifies projects that would be helpful, but, unfortunately, the budget doesn't allow

for them. Some of these projects have been included on our wish list.

If you have questions about the wish list, please contact the shelter.

Daily Use Items

- ♦ Purina Dog and Puppy Chow
- ♦ Purina Cat and Kitten Chow
- ♦ Paper Towels
- ♦ Toilet Paper
- ♦ Double Pocket Folders
- ♦ HE Laundry Soap
- ♦ Garbage bags (55, 39, and 13 gallon)

- ♦ Copy Paper
- ♦ Gift Cards from Staples, Menards, Farm and Fleet, Walmart and Home Hardware.

Special Items

- ♦ 6x6 Treated Posts 8' long
- ♦ Battery Charger
- ♦ Picnic Tables
- ♦ Park Style Benches
- ♦ Riding Lawn Mower
- ♦ Large Dog Kennels
- ♦ Grooming Table
- ♦ John Deere Gator or UTV with dump box.

FRIENDS FOREVER HUMANE SOCIETY

966 Rudy Road
Freeport IL 61032

NON-PROFIT ORG
U.S. POSTAGE
PAID
FREEPORT, IL
PERMIT NO. 105
CHANGE SERVICE REQUESTED

Phone: 815-232-6164
E-mail: info@friendsforeverhs.org
www.friendsforeverhs.org



PUTTING PETS IN FOREVER
HOMES SINCE 1953

Visit us online at
www.friendsforeverhs.org

MEMBERSHIPS

All memberships renew one year from the date of inception. Have you renewed yours yet?
Yes! I wish to become a member of Friends Forever Humane Society.

New Membership Renewed Membership

- ☐ Lifetime \$1,500 (one-time fee)
12-month payment plan option
☐ Patron \$250 or more
☐ Couple \$60

- ☐ Individual \$40
☐ Senior (62 and over) \$25
☐ Person with Disabilities \$25

Membership dues enclosed \$

DONATIONS

I wish to make a donation!

Donation enclosed \$

MEMORIALS & HONORARIUM

I wish to make a gift

In memory of Gift amount \$

In honor of Gift amount \$

TOTAL AMOUNT ENCLOSED \$

Please make checks payable to: **Friends Forever Humane Society**
and mail to us at: 966 Rudy Road, Freeport, IL 61032

Name
Address
City State
Zip

Phone
E-mail